

## What's New in PowerRadar™ V1.39

Panoramic Power is happy to announce the availability of V1.39, a new version of PowerRadar™ cloud platform, which is available to all customers as of today.

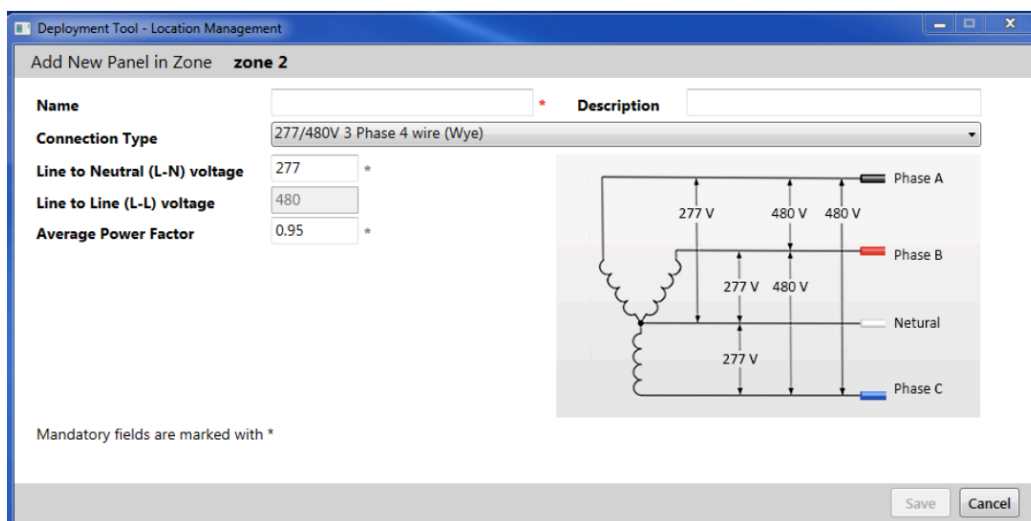
### Change Summary

PowerRadar™ V1.39 contains a lot of updated functionality including:

- An updated deployment tool supporting more US panel type configurations (Delta, Dual Pole, etc).
- Better and simpler time zone handling
- The ability for account administrators to rename sites, buildings, zones and devices from within the WebApp itself.
- Even faster loading of device view pages and charts
- Easy zoom-in by clicking the device view x-axis to zoom into a specific month, day or hour and easy ability to revert to previous views using the new back button.

### Deployment Tool Changes

- A [new deployment tool user guide](#) is available for this version (Dev. Tool V4.99)
- When defining a new panel, the installer must define its electrical type. The supported electrical types (single phase, three phase etc.) are location dependent, with more options available for North American sites:

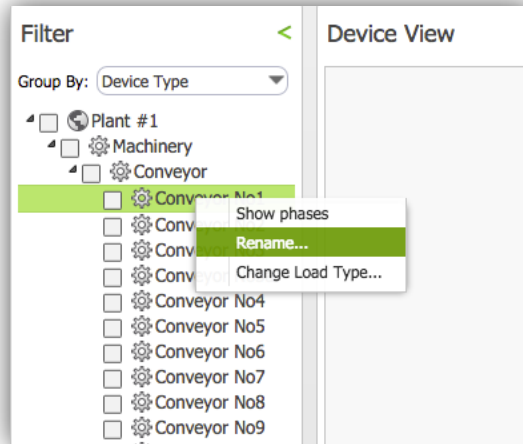


- When defining a device within a panel, the system permits device types based on the panel type. As an example, it will not allow to define a three-phase device on a single phase panel.

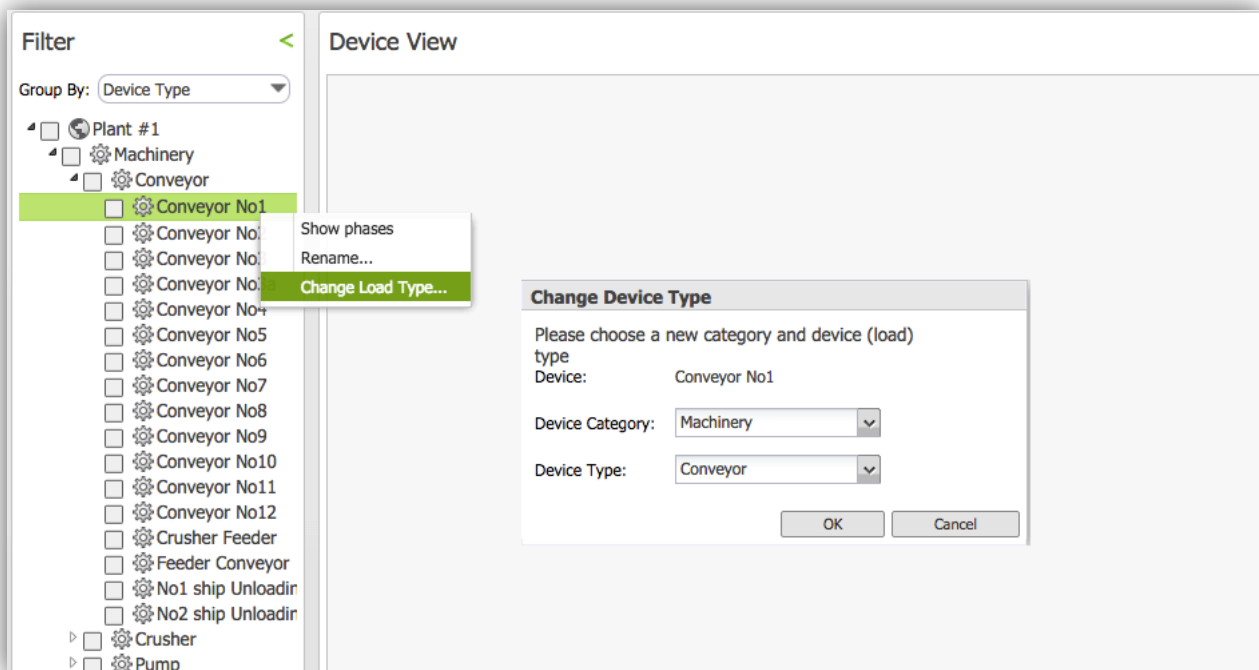
### Web App → Device View changes

We have implemented many new features and functionalities with focus on the Device View:

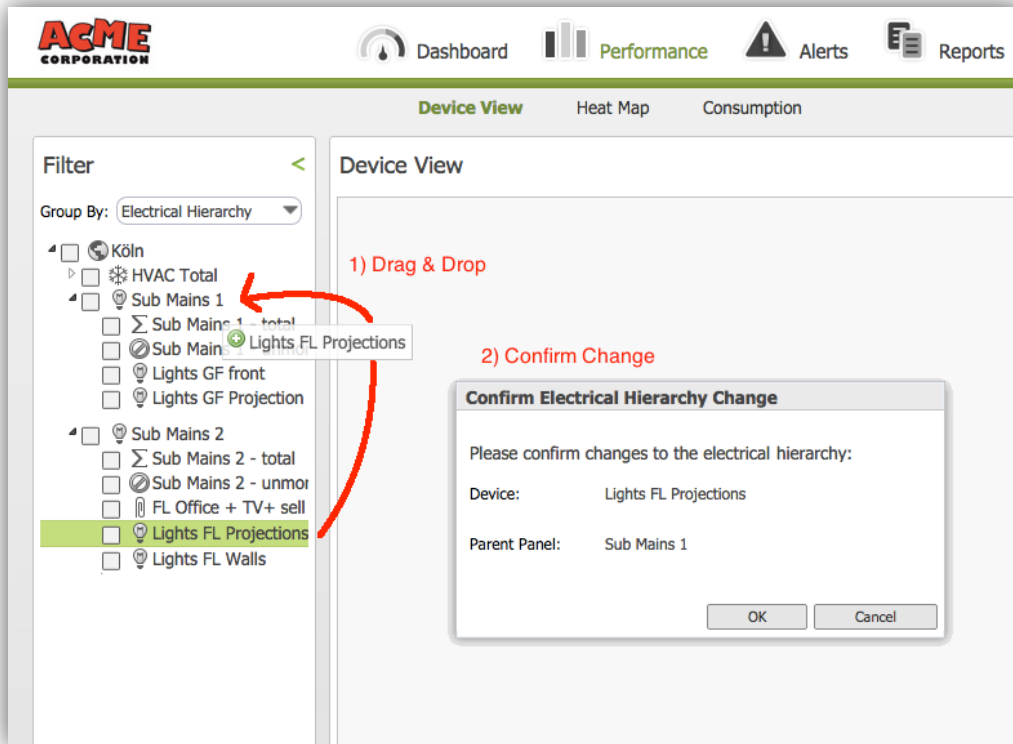
- **Renaming** – It is now possible to rename any site, building, zone or device by right clicking on the item in the device view tree view. This functionality is available only to users with Web Administration privileges.



- **Change Device (Load) Type** – It is now possible to change the device type of any device by right-clicking it in the device view. This functionality is available only to users with Web Administration privileges.



- Update Electrical Hierarchy** – It is now possible to update the electrical hierarchy from within the device view. To do so, group the devices by ‘Electrical Hierarchy’ and then drag & drop a device under a parent panel. A confirmation dialog-box will appear. This functionality is available only to users with Web Administration privileges.



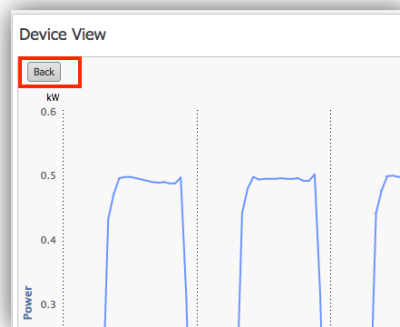
- Data Overlay** - Data overlay is now a built-in part of the device view. Users can now choose any device and immediately compare the device data to previous periods:



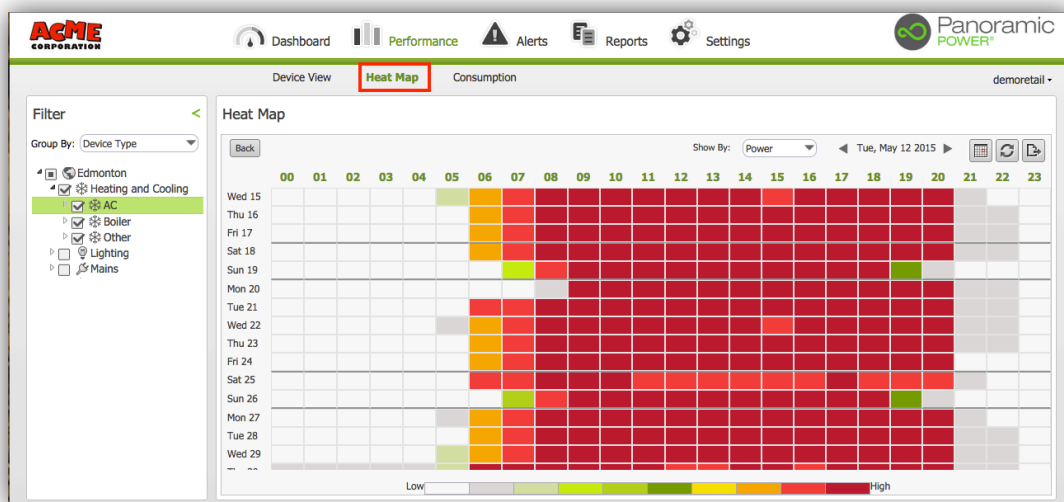
- **Click X axis to zoom** - Using the device view, users can now easily zoom in by clicking a specific x axis value. Supported zoom levels include:
  - Yearly → Monthly → Daily → Hourly
  - Weekly → Daily → Hourly

To zoom in, simply click the month, day or hour on the x-axis.

- **Back button** - Using the device view, users can now easily go back to see the previous view that was displayed. This feature works perfectly with the new zoom feature to provide great flexibility when researching data.



- **Device based heat-map** – The heat-map is now device based. This enables the creation of heat maps for every device or device combination needed. It also results in a much faster display time. The heat-map displays the sum all devices selected in the left pane.



The entire Panoramic Power team is excited about this release and confident it will provide enhanced usability and flexibility for our users. Please feel free to contact us for questions or feedback.